

Wyoming Department of Education
Distance Education Program Update

to the
Joint Education Interim Committee

October 29, 2008
Casper, Wyoming

Presented by
Teri Wigert, TCD Unit Director
Chuck Mitchell, DE Section Supervisor
Scott Bullock, DE Section Consultant

Authority: Legislation/Statutes

- Senate File 0070, Enrolled Act 45
- W.S. 21-2-202(a)(xxxi)
- W.S. 21-13-330

History: Perspective/Process

- House Bill 0115
- Distance Education Task Force (DETF) Report
- Senate File 0070, Enrolled Act 45
- Chapter 41 Rules and Regulations posted for public comment (September 16, 2008)

Actions: Data/Participation/Trainings

- Created the Wyoming Switchboard Network (WSN) website – required for the facilitation and oversight of the progress of DE programs
- Created the Distance Learning Plan (DLP) template – required for each DE student, uses milestones to track student progress and ADM funding
- Created, released (May 1, 2008) and awarded (August 15, 2008) the Distance Education Grant (DEG)
- Drafted, revised and posted the Chapter 41 Rules and Regulations, ADM funding concurrent with Chapter 8 Rules and Regulations
- Completed training sessions with the business managers, School Improvement Conference participants, WEA
- Created the WDE 591 form to track student completion of DE coursework; replaces the WDE 581 form

Financial: Expenditures To Date/Anticipated Other Costs

- DEG: \$137,000.00 (August 2008 awardees)

Results: Outcomes/Feedback

- Eight DE Grants awarded
- Two fulltime online program providers and several supplementary WEN Video course providers
- One program beginning the Spring of 2009
- Increased district interest
- Dialog with the Community Colleges

Recommendations: Next Steps

- Continue to focus on the high quality content and accountability of the WSN courses through open disclosure
- Promote opportunities for Districts to get involved
- Constantly evaluate the DE Program processes at the WDE level
- Rewrite the DEG to concentrate more on the programs' development of AP, Hathaway, and core curriculum courses

DISTANCE EDUCATION AND THE WYOMING SWITCHBOARD NETWORK (WSN)

- ☐ The Wyoming Switchboard Network acts as the central collection of distance education resources available to Wyoming students, parents, instructors, school districts, and DE program providers.
- ☐ The Switchboard is located on the Wyoming Department of Education's public website at:
www.k12.wy.us/TCD/WSN/index.asp
- ☐ It is the responsibility of the resident district to review both program and course level information to verify that the prospective distance education course(s) received by a student meets or exceed their district's program and content standards.
- ☐ Please direct questions and comments to Scott Bullock, WDE Distance Education Consultant, at (307)777-7418 or sbullo@educ.state.wy.us

DISTANCE EDUCATION STATUTE, RULES AND REGULATIONS

- ☐ W.S. §21-13-330: "Distance education; program content; distance learning plan required; students within ADM of resident district; agreements with districts authorized."
- ☐ Chapter 41 Emergency Rules and Regulations: <http://soswy.state.wy.us/Rules/RULES/7164.pdf>
- ☐ Notice of Intent to Adopt Rules: The public comment period for these rules runs from October 1, 2008 through November 14, 2008.

MILESTONES

- ☐ Milestones are the key topics or required objectives presented in a distance education course and are used to track student progress through the course.
- ☐ All students enrolled in distance education courses satisfy compulsory attendance requirements by completing the Milestones outlined in the student's distance learning plan.
- ☐ The resident district will be required to report to the WDE the completion status of these Milestones for every student participating in a distance education course (WDE591) and use this information when calculating the funding received for that student (WDE600).

ASSESSMENT AND ADEQUATE YEARLY PROCESS (AYP)

- ☐ Students enrolled in distance education course(s) are not exempt from state, local or district assessments.
- ☐ Student performance, accountability, state and local assessment results, and adequate yearly progress (AYP) are the responsibility of the resident district.

ENROLLING STUDENTS

- ☐ All distance education course enrollments are initiated at the resident district.
- ☐ Each distance education program provider establishes their own requirements for student enrollment.
- ☐ The **Distance Learning Plan (DLP)** is a student-centered academic contract that details information about each DE course taken by the student, how many Milestones are presented in each course, and how the student's progress will be monitored. *This DLP needs to be maintained by the resident district (in conjunction with the WDE 591) to support attendance and membership records for distance education students.*
- ☐ A **Memorandum of Understanding (MOU)** acts as the funding agreement between the resident district and the program provider's district.

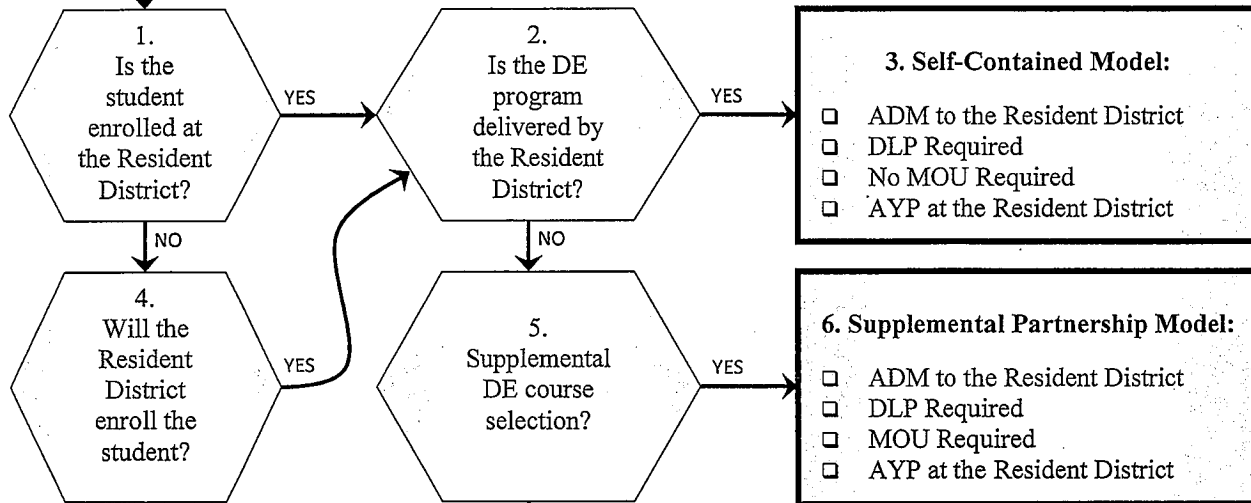
FUNDING

- ☐ Each student participating in a distance education course is included in a district's average daily membership in accordance with Section 10(e) of the Department's Chapter 8 Rules and Regulations for the School Foundation Program:

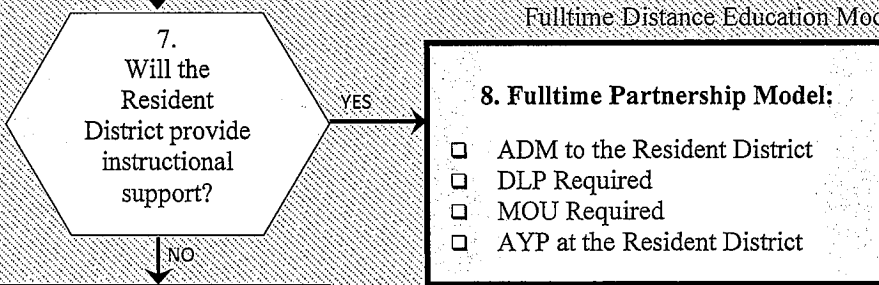
<http://soswy.state.wy.us/Rules/RULES/7036.pdf>

ENROLLMENT FLOWCHART

DE course selection or all students begins at the Resident District



Fulltime Distance Education Models



9.
 Resident District withdraws student from membership counts

10.
 Student enrolls at the non-Resident District
 The non-Resident District notifies the Resident District
 The non-Resident District assumes all Resident District roles and responsibilities

11. Fulltime 'Transfer' Model:
 ADM to the Program Provider's District
 DLP Required
 No MOU Required but a Contract is Required for a Mentor/Tutor to Provide Instructional Support
 AYP at the Program Provider's District