



**WHIRLWIND, LLC**  
A WOLD COMPANY

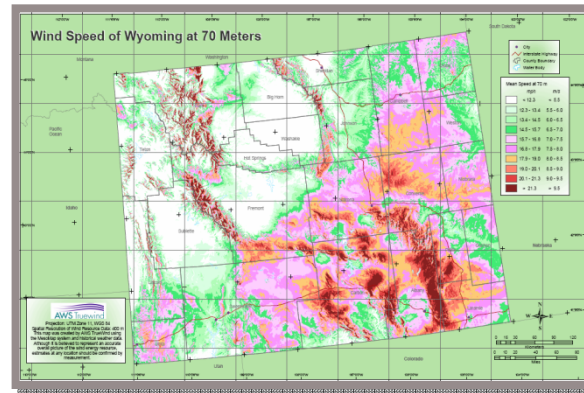
**DEVELOPING WIND ENERGY ON PRIVATE LANDS**  
**Presentation to Wind Energy Task Force, August 26,**  
**2009**

- Whirlwind Limited Liability Company (Whirlwind LLC) is a privately held company engaged in the creation and development of wind energy projects in Wyoming. The company was established in 2005 as a subsidiary of Wold Companies and has offices in Casper, Wyoming and Denver, Colorado.
- Founded by former US Congressman John Wold, and building on two generations of experience in oil, gas, coal, uranium, and mineral exploration and production in the west, the Wold Companies have built a business harnessing our nation's powerful energy resources.
- Wold Companies and the Whirlwind professionals have extensive experience working on energy projects in Wyoming providing the necessary credentials and understanding of bringing wind resources to the market. The company has worked extensively with private landowners, the BLM, Industrial Sighting Council, Wyoming Business Council, environmental permitting groups, Western Area Power Administration and many other organizations on projects through various stages of development. They have worked alongside other energy development companies and utilities to create the most efficient and productive working environment.

- Riley Ridge LLC
- Gas Tech
- American Talc
- MET Life
- Hole in the Wall Ranch
- Whirlwind LLC

- Riley Ridge is a project involved in the development of a natural gas processing plant in Sublette County, Wyoming. After final construction, the plant will sequester 1,000,000 tons of CO<sub>2</sub> per year, and will produce 7% of the world's helium as a by-product.
- Wold Companies has been working on a UCG (Underground Coal Gasification) project. Through their subsidiary Gas Tech, they have partnered with BP to select a pilot location with the potential to build a 500 to 1,000 MW power plant in the Powder River Basin.
- American Talc is North America's largest supplier of Ceramic Talc. With one processing plant and three mines, they manage over 80 years worth of reserves consisting of white, pink, grey, and black talc.
- Wold Companies manages oil and gas, as well as mineral royalties for various individuals and companies.
- The Wold's have been involved in the cattle ranching industry for over 30 years
- 7 Wind Energy projects in various stages of development in Wyoming

- Identify the Target Area
  - Wind
  - Transmission
  - Environmental and Cultural
  - Suitable terrain for Construction



- It is the Landowners that have one of the biggest stakes in this game
- Wind Energy is a way to create wealth for Wyoming Citizens
- Maintain the ranching way of life at a time when this could not be more important
- Approximately \$11,000 annually / turbine sited on private land
  - ▣ Assuming \$60 ppa, 35% capacity factor, and a 4% royalty
  - ▣ For one section, this translates to \$55,000 annually

# Benefits to Landowners



6

