


Sage-grouse and Wyoming

A Bird That May Define Our Future



What is the Issue?

- ❑ Declining numbers of birds westwide at the end of the last century
 - ❑ Challenges to habitat
 - ❑ Challenges to the bird itself
 - ❑ Oppressive nature of Endangered Species Act
 - ❑ Broad distribution of Sage-grouse
-



A Very Complex Bird



- Fidelity
 - Local or Migratory
 - Habitat Preferences
 - Later successional
 - Early successional
 - Other weird places
 - Unknowns
-

Talisman for Other Species

- 73 species of concern overlap with Sage-grouse habitats
- Nearly one-third of species of concern in Wyoming can be counted in Sage-grouse conservation efforts
- Like many species that are considered “sensitive,” Sage-grouse tend to need high levels of disturbance





Where Have We Been?

- Statewide Conservation Plan
 - Industry, Agriculture, Conservation, Wildlife professionals, governmental jurisdictions
 - Three years – 20 members
 - Multiple Tracks of Evaluation
 - Ecology of the species
 - Analysis of threats
 - Analysis of economic realities
 - Primary goal of maintaining Sage-grouse
-



Where Have We Been?

- Multiple Conservation Efforts
 - Local Working Groups
 - State Wildlife Agencies
 - WAFWA
 - Federal Agencies
 - Governor's Summit
 - Statewide Implementation Team
-



What is Our Approach?

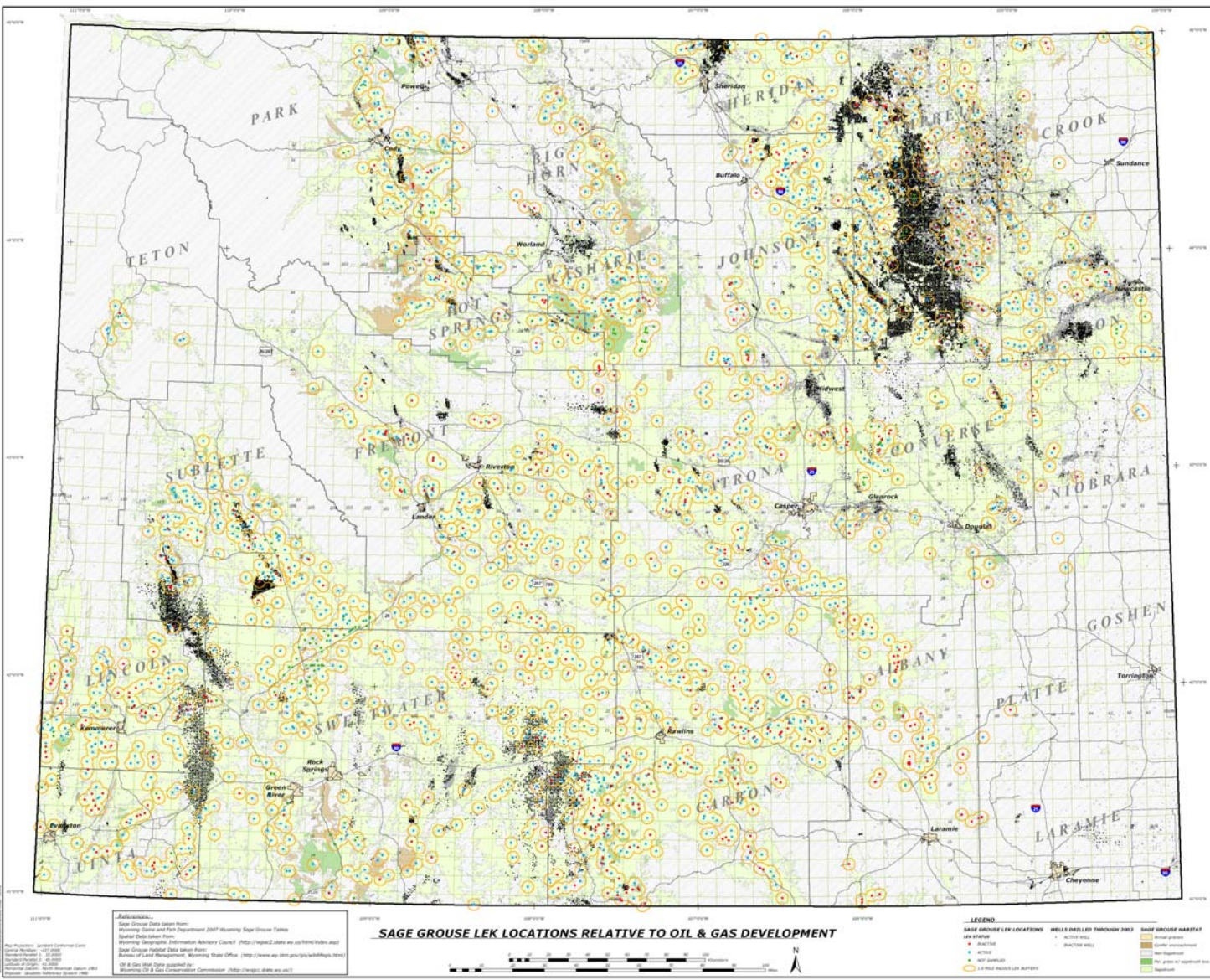
- Implement and Evaluate
 - Core Population Areas
 - Similar to Bighorn Sheep management
 - Quantifiable
 - Concrete
 - Aggressive Management
 - Incentive based
 - Assume Wrong and Re-evaluate
-

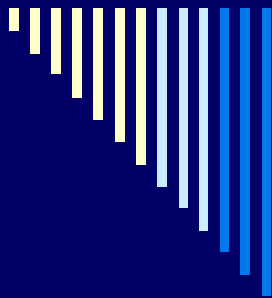


What is Our Approach?

- Core Population Areas
 - Similar to Bighorn Sheep management
 - Quantifiable
 - Concrete
 - Aggressive Management
 - Incentive based
 - Statewide Approach
-

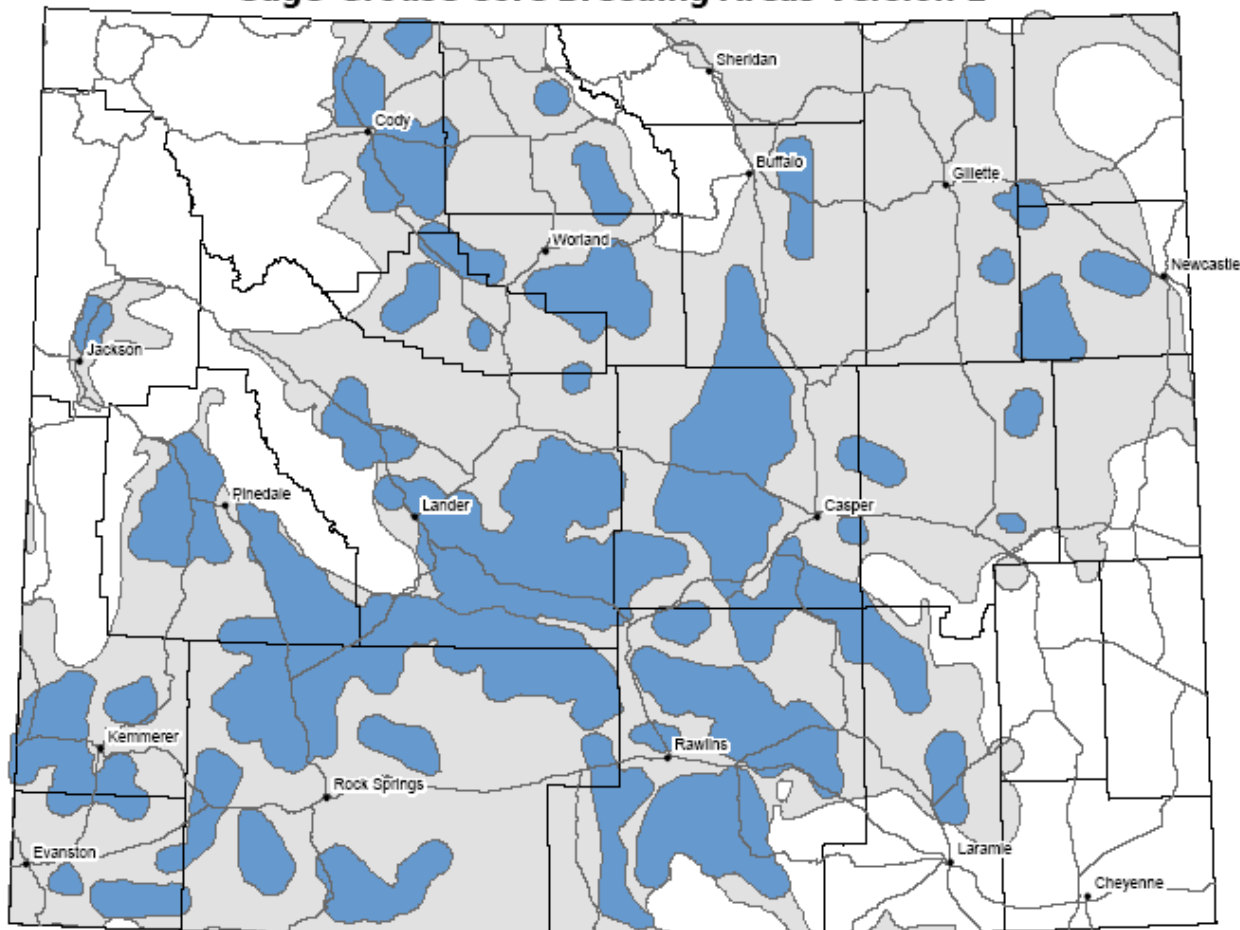
CORE
POPULATION
AREAS AND
OIL AND GAS





CORE POPULATION AREAS CONCEPT

Sage-Grouse Core Breeding Areas Version 1



Nyssa Whitford
Nongame GIS Analyst
Lander Regional Office
03.18.08



0 15 30 60 90 120 Miles

Core Areas shown were delineated by the Governor's Sage-Grouse Implementation Team during their 03.17.08 meeting in Lander, WY.

- Cities
- Main Roads
- Core Areas 03.17.08
- Counties
- Current Sage-Grouse Distribution



How to Find Oil.....



Look for
Sage-grouse



Opportunity Knocks....or Booms



- We Define the Areas
 - We Define the Strategy
 - We Provide Incentives
 - We Do What is Right
 - For the Bird
 - For our People
-



Leadership in Conservation

- Proactive management
 - Adequate Funding
 - Local Working Groups
 - Mapping
 - Habitat Enhancements
 - Permanent Habitat Conservation
 - Dynamic Process
 - Adaptive management
 - Incentive based
 - Practical Approach
 - Drought
 - Decadent habitats
 - Other species
-



Leadership in Conservation

