

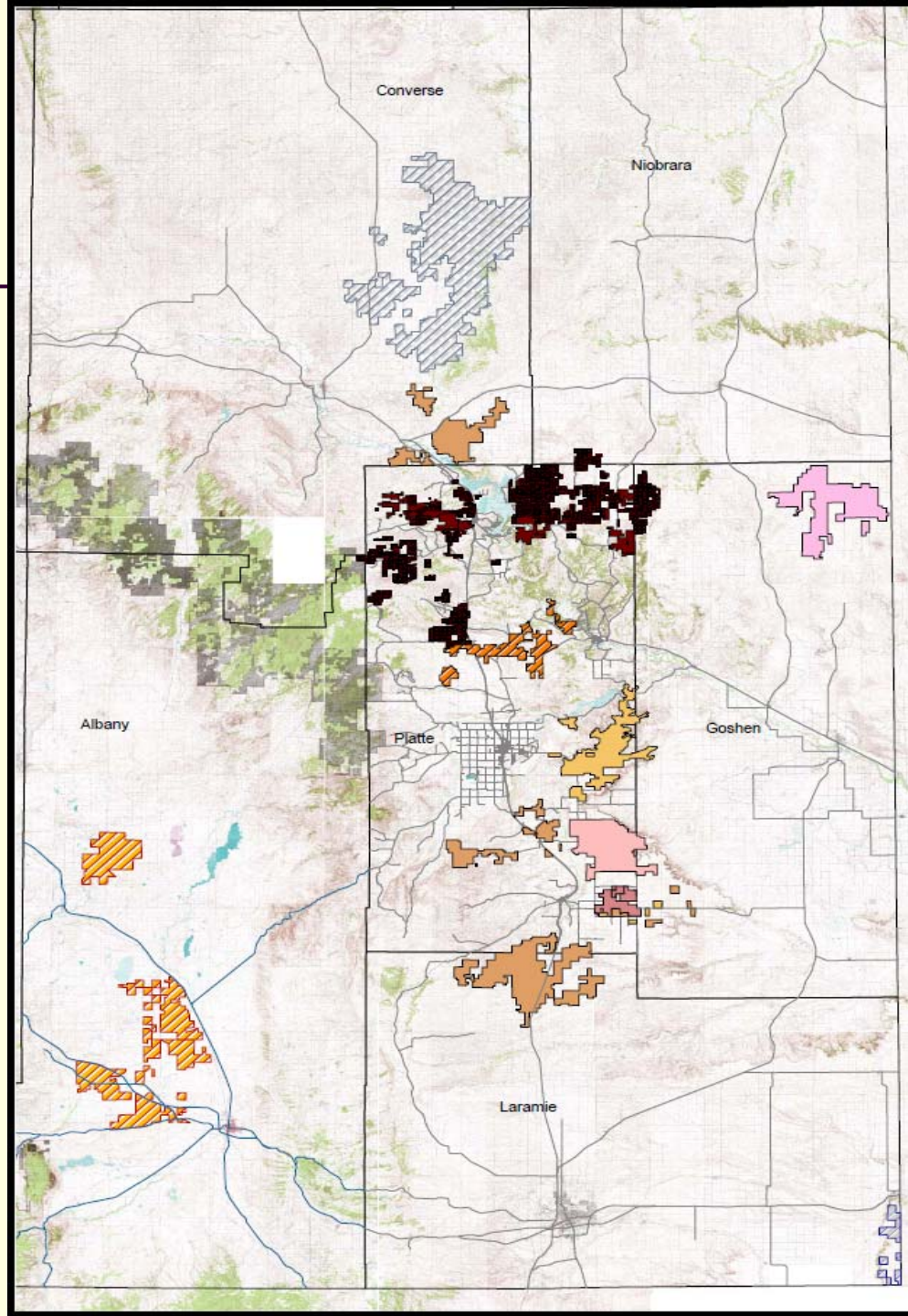
# Problems, Solutions Benefits of Wind

By  
Bob Whitton, REAL Chairman

# Renewable Energy Alliance of Landowners

## Legend

- Antelope Gap Wind Energy Association
- Bordeaux Wind Energy Association
- Chugwater Wind Energy Association
- Slater Wind Energy Association
- Dwyer Wind Energy Association
- South Chugwater Wind Energy Association
- Pine Bluffs Wind Energy Association
- Wind Ranches Wind Energy Association
- Walker Creek Wind Energy Association
- Prairie Center Wind Energy Association
- Orin Junction Wind Energy Association
- Glendo Wind Energy Association
- wyoming\_counties



# Renewable Energy Alliance of Landowners (REAL)

---

- 300+ Landowners and growing
- 700,000 acres in Platte, Goshen, Converse, Niobrara, Laramie and Albany counties
- 6500 MW potential
- Issues common to all

# Meet with Anyone

---

- Compare viewpoint, perspective, objective
- Work together to solve problems
- Mitigate concerns
- Benefit all citizens of Wyoming

# Why develop wind?

---

- Private Property Right
- Stay on the Land
- Benefits to all

# Benefits

---

- Tax Revenue
  - Property
  - Sales
  - Production
- Landowner Revenue
- Jobs
- Services
- Materials

# Benefits

---

- Office Space
- Work Facilities/Shops
- Maybe
  - Manufacturing facilities
  - School/Training Facility

# Think

---

- Schools
- Nursing Homes/Elderly Care
- Roads
- Keep our young people **HERE**

# Neighbors' Concerns

---

- Property Value
- Viewshed
- Hunting/Wildlife

# REAL Issues

---

- Anemometers
- Wind Rights
- Taxes
- Wildlife

# REAL Issues

---

- Energy Partnership for Wyoming
  - Firm Wind
  - Green up Fossil Fuels

## ■ **TRANSMISSION**

## Projects

Wyoming-Colorado  
Intertie



Energy Gateway  
(West & South)



TransWest  
Express



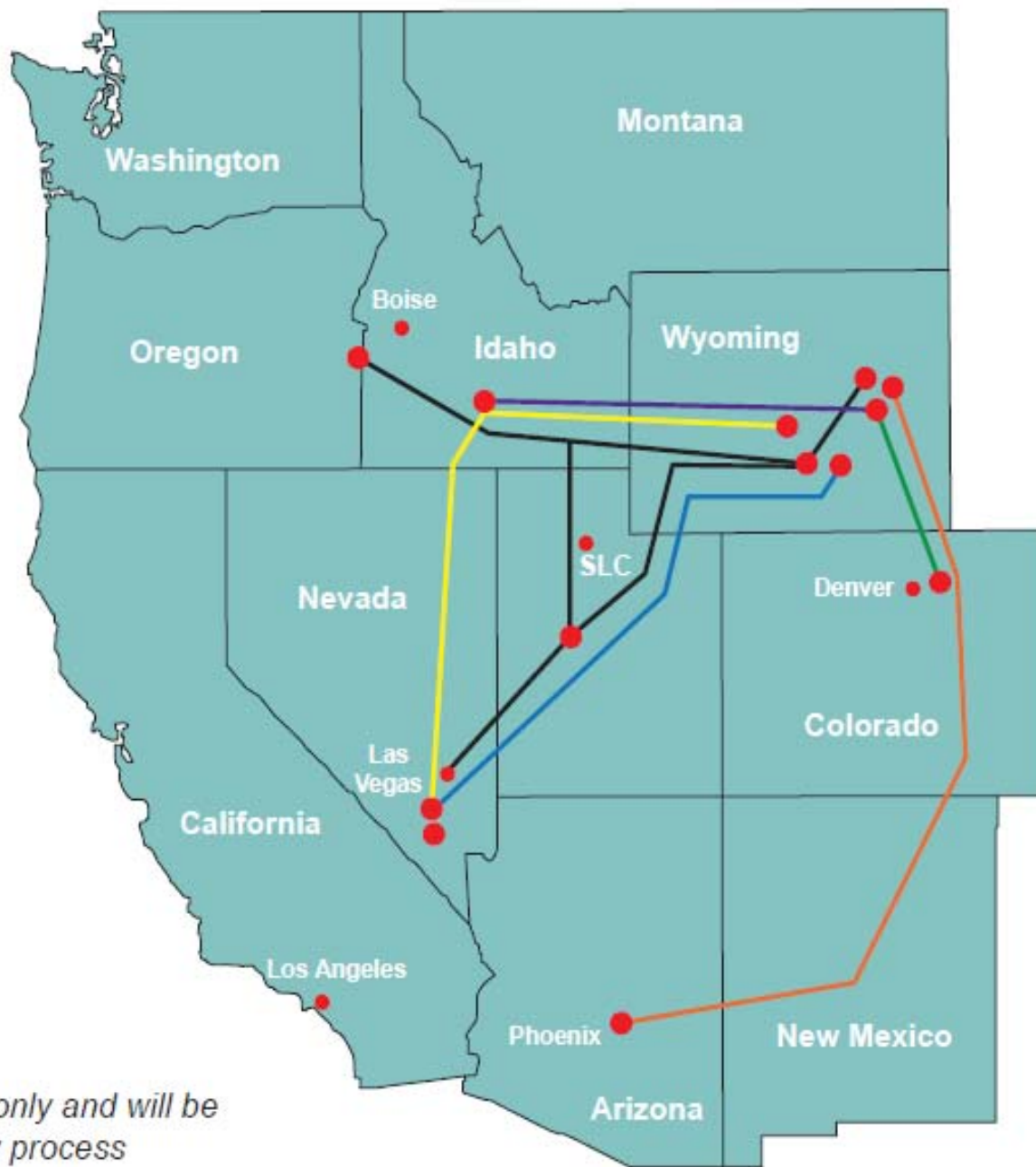
High Plains  
Express



Zephyr



Overland Intertie



*Routes shown are for illustrative purposes only and will be finalized following a comprehensive review process*

# Transmission

---

- Location
- Capacity
- Availability
- LTA

# REAL

---

- **We will work with anyone**

# Questions?

---

Bob Whitton, REAL Chairman

Phone: 307-331-4606

Email: [tworranch@wildblue.net](mailto:tworranch@wildblue.net)