

WYOMING PUPIL TRANSPORTATION TRENDS

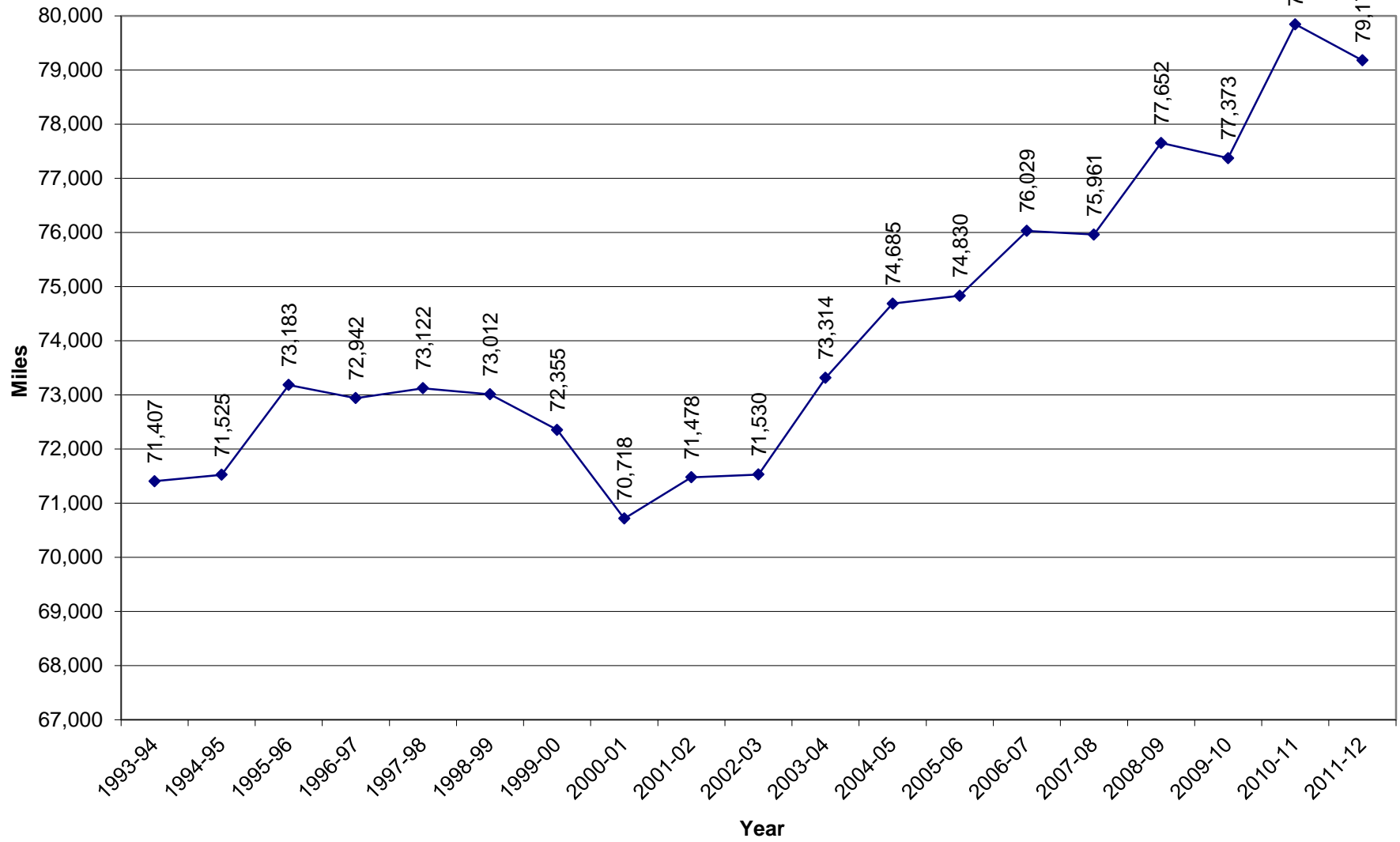
1993-1994

TO

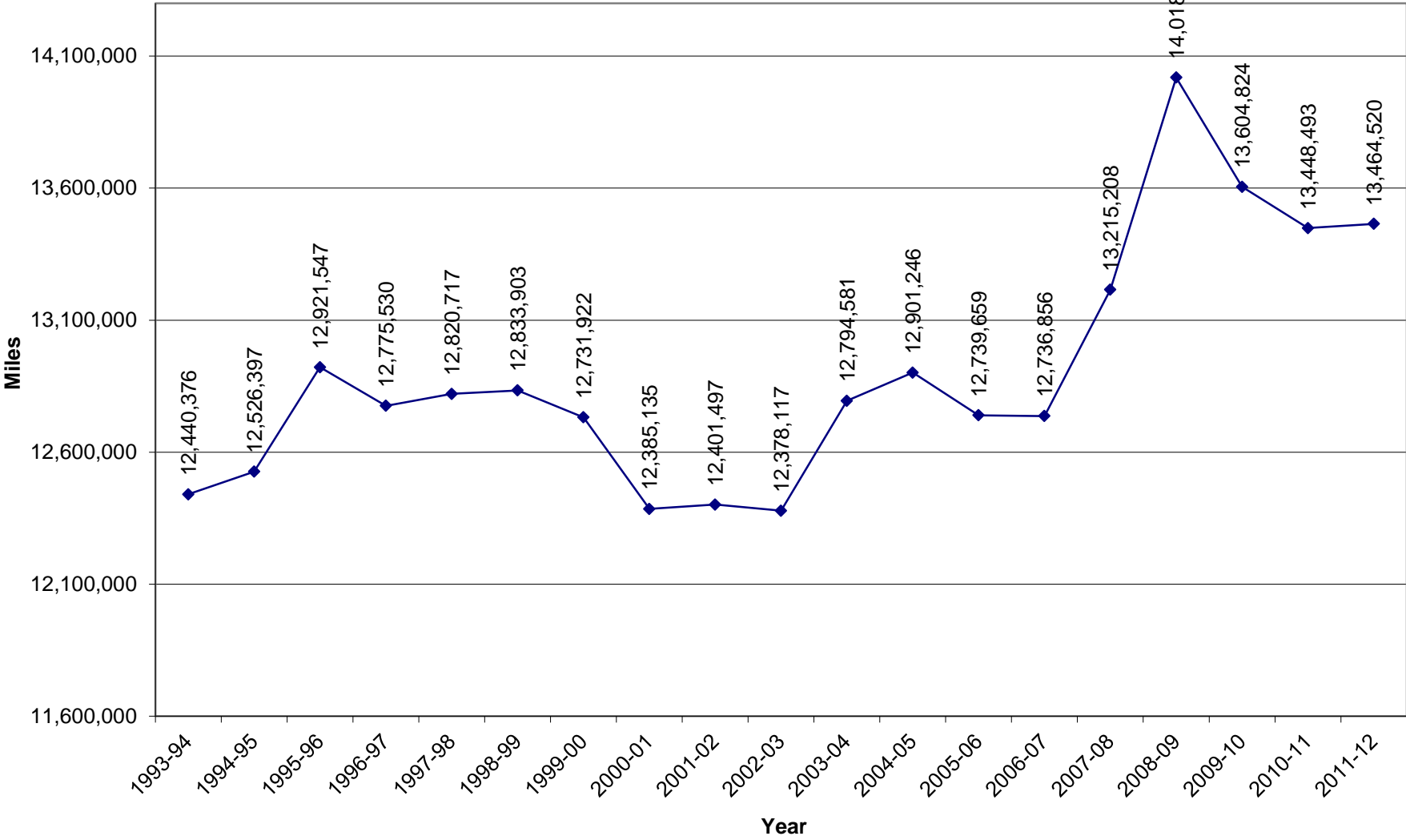
2011-2012

Wyoming Department of Education
David Koskelowski
Program Manager, Traffic Safety & Pupil Transportation
Cheyenne, Wyoming

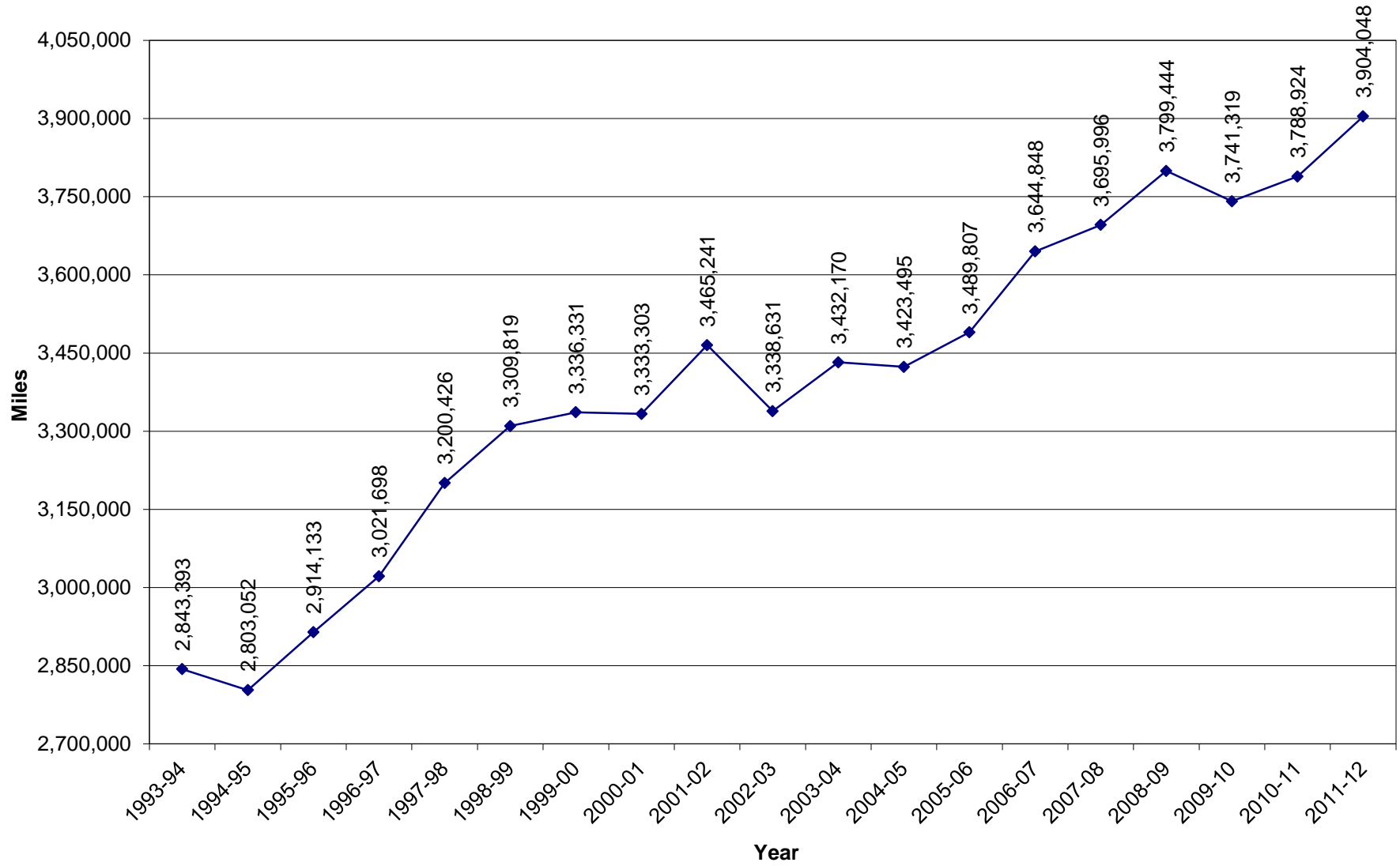
Daily Miles



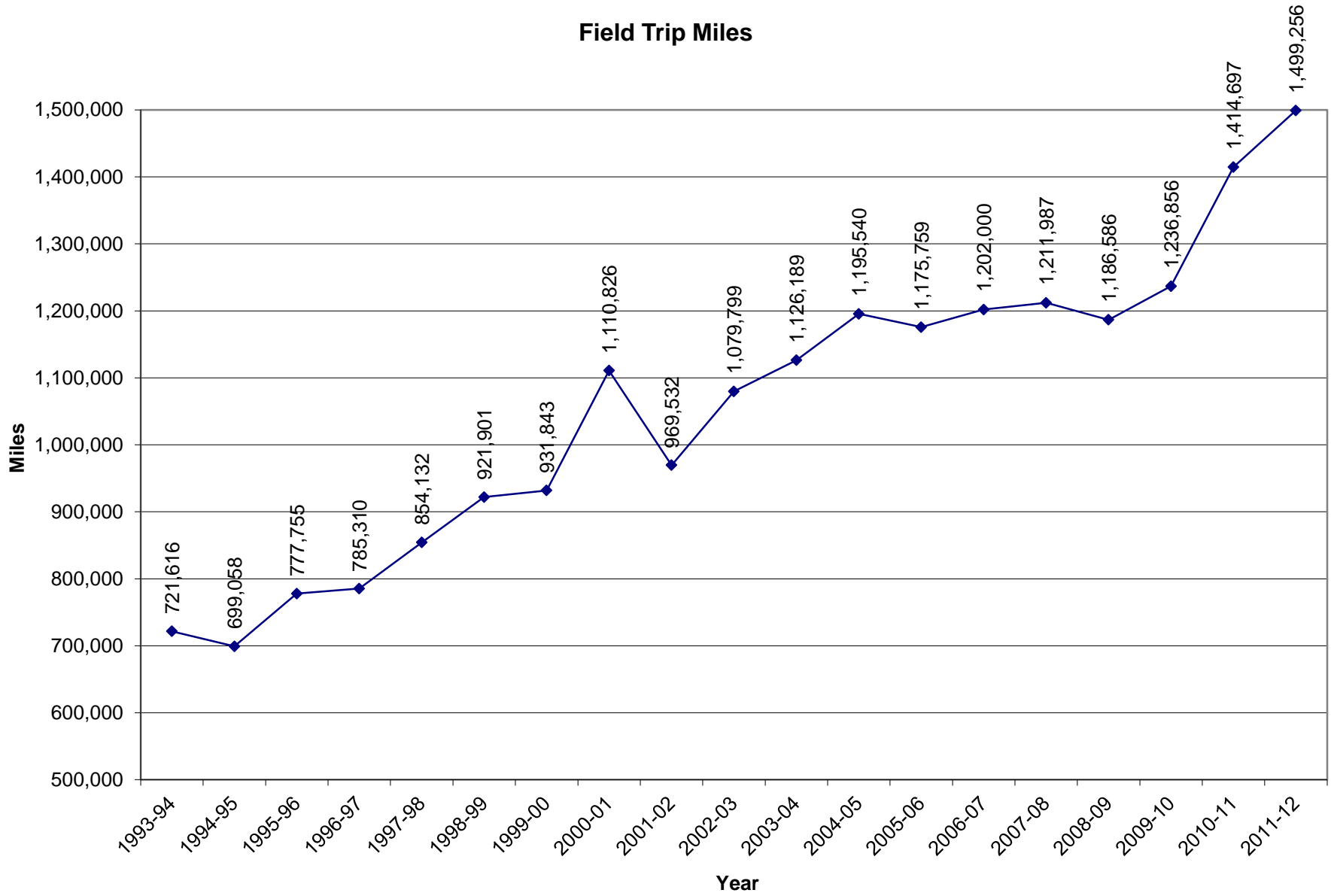
Route Miles



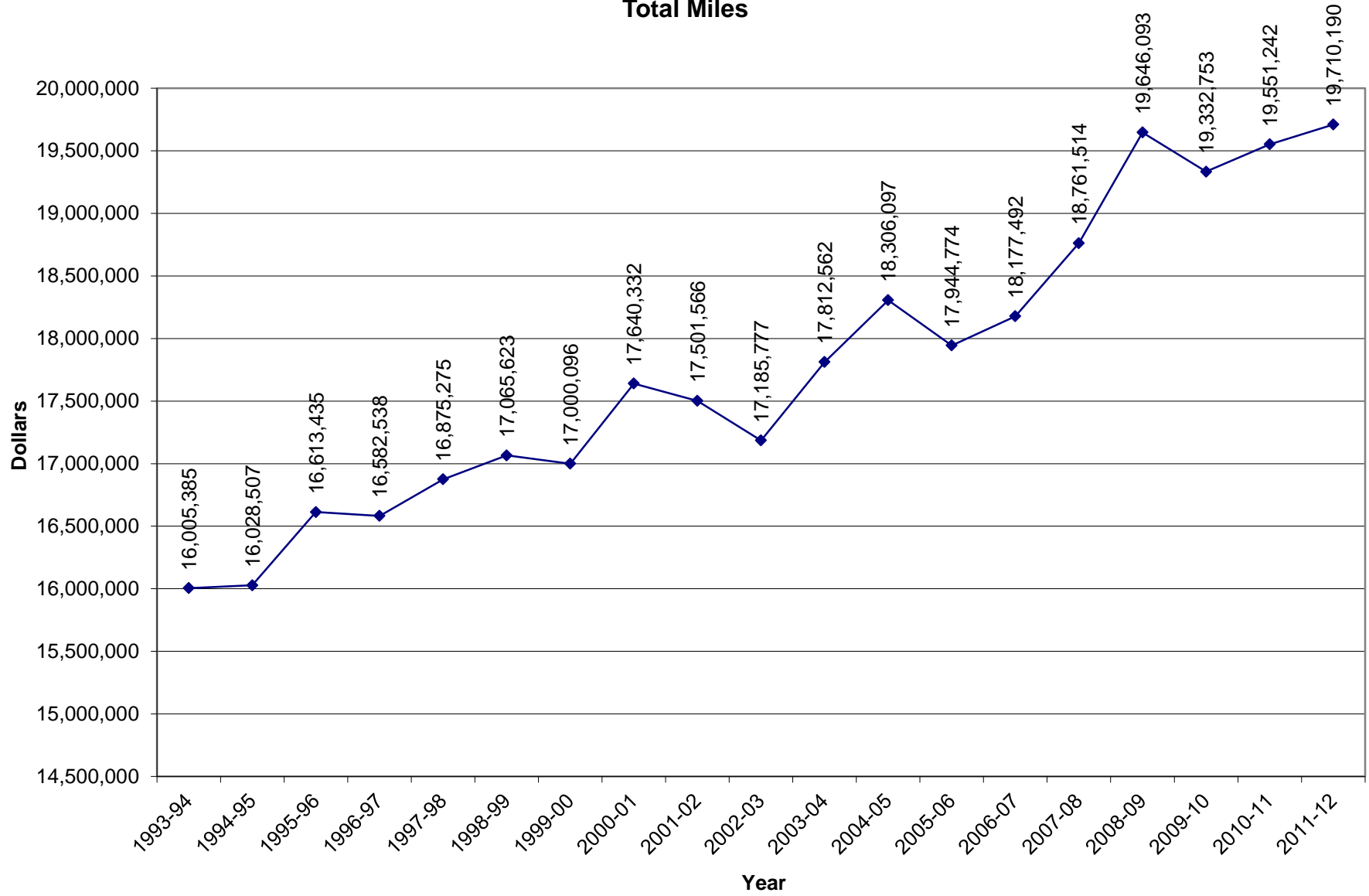
Activity Miles



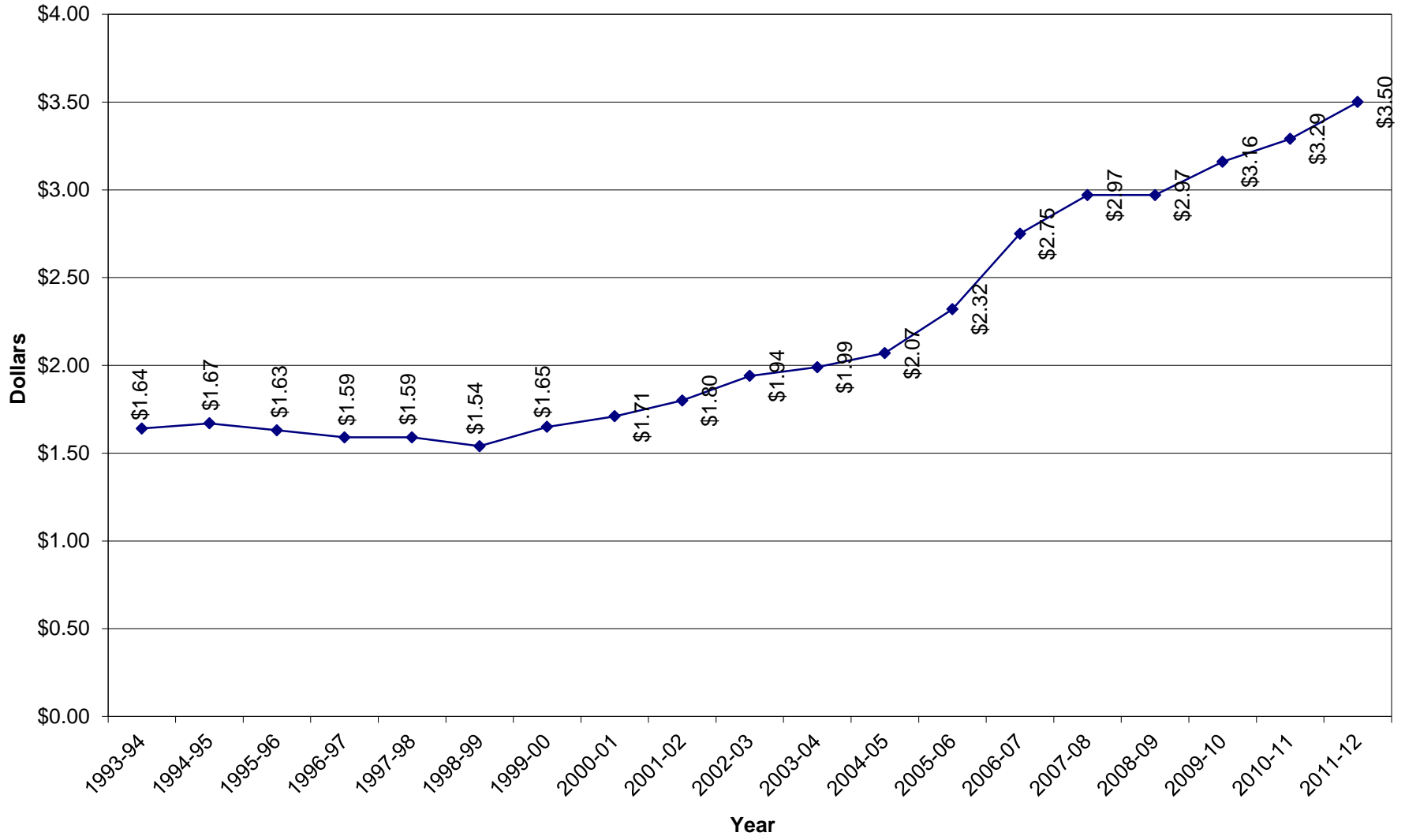
Field Trip Miles



Total Miles



Cost Per Mile



Transportation Facts

Year	Daily Miles	Students	Fly By - AM	Fly By - NOON	Fly By - PM	Male Drivers	Female Drivers	Mechanics (M)	Mechanics (F)	District A	District B	District C	District D	District MPV	District Total	Route Miles	Activity Miles	Field Trip Miles	Summer School Miles	Other Miles	Extra Miles	Total Miles	Cost Per Mile
1981-82		40,387														9,377,266						9,377,266	\$2.11
1982-83		42,506													1,142	10,060,419	2,381,196	1,309,827				13,751,442	\$1.55
1983-84		41,322													1,213	10,075,418	2,998,398					13,073,816	\$1.53
1984-85		40,423													1,344	10,477,019	2,498,532	424,185				13,399,736	\$1.59
1985-86		43,517								151	126	793	295	147	1,512	11,272,970	2,556,065	595,604				14,424,639	\$1.58
1986-87		42,203								160	113	793	277	167	1,510	11,832,206	2,901,891	411,843				15,145,940	\$1.49
1987-88		43,973								157	117	781	281	191	1,527	11,635,269	2,611,682	539,425				14,786,376	\$1.41
1988-89		37,686								216	65	766	292	179	1,518	11,352,115	2,616,939	515,972				14,485,026	N/A
1989-90		36,538								213	69	781	311	184	1,558	11,778,605	2,723,381	562,847				15,064,833	\$1.43
1990-91	67,321	37,637				380	548	100		224	35	766	338	185	1,548	11,812,566	2,760,655	643,936				15,217,157	\$1.65
1991-92	69,876	38,883				398	544	97		232	28	744	350	189	1,543	12,239,868	2,884,458	620,028				15,744,354	\$1.68
1992-93	70,156	38,812				383	554	96		226	25	699	404	199	1,553	12,244,039	2,818,606	621,792				15,684,437	\$1.66
1993-94	71,407	38,682				376	564	100		228	22	719	396	183	1,547	12,440,376	2,843,393	721,616				16,005,385	\$1.64
1994-95	71,525	39,374				368	583	96		222	23	699	419	212	1,575	12,526,397	2,803,052	699,058				16,028,507	\$1.67
1995-96	73,183	37,705				374	587	90		209	28	689	431	200	1,557	12,921,547	2,914,133	777,755				16,613,435	\$1.63
1996-97	72,942	36,122				387	585	92		204	24	679	452	209	1,566	12,775,530	3,021,698	785,310				16,582,538	\$1.59
1997-98	73,122	35,814				384	552	83		202	20	682	472	213	1,592	12,820,717	3,200,426	854,132			***	16,875,275	\$1.59
1998-99	73,012	34,503				390	594	88		208	24	710	497	330	1,769	12,833,903	3,309,819	921,901				17,065,623	\$1.54
1999-00	72,355	33,059	14,525	2,100	18,725	374	582	89		207	23	680	533	312	1,755	12,731,922	3,336,331	931,843				17,000,096	\$1.65
2000-01	70,718	31,887	23,800	1,575	23,275	387	587	85		191	27	666	541	316	1,741	12,385,135	3,333,303	1,110,826				17,640,332	\$1.71
2001-02	71,478	32,852	28,175	6,825	33,250	379	580	82		188	20	638	574	306	1,726	12,401,497	3,465,241	969,532	161,883	503,413		17,501,566	\$1.80
2002-03	71,530	32,930	19,775	3,325	34,325	367	577	90		188	19	636	581	306	1,730	12,378,117	3,338,631	1,079,799	165,404	223,826		17,185,777	\$1.94
2003-04	73,314	33,314	15,225	4,725	24,675	363	561	96		191	17	615	601	307	1,731	12,794,581	3,432,170	1,126,189	224,638	200,434		17,812,562	\$1.99
2004-05	74,685	34,273	17,675	5,600	28,525	397	565	83	2	200	1	610	601	296	1,708	12,901,246	3,423,495	1,195,540	247,669	102,453		18,306,097	\$2.07
2005-06	74,830	33,470	17,325	4,025	33,075	401	549	87	2	205	1	613	577	313	1,709	12,739,659	3,489,807	1,175,759	314,504	110,144	114,901	17,944,774	\$2.32
2006-07	76,029	32,721	17,675	1,750	26,950	414	561	80	4	203	0	611	610	270	1,694	12,736,856	3,644,848	1,202,000	341,633	121,133	131,022	18,177,492	\$2.75
2007-08	75,961	33,889	19,600	2,275	28,350	397	576	79	3	197	0	623	616	275	1,711	13,215,208	3,695,996	1,211,987	377,945	137,297	123,081	18,761,514	\$2.97
2008-09	77,652	35,185	20,825	2,100	24,500	401	582	79	3	186	0	642	622	271	1,721	14,018,984	3,799,444	1,186,586	452,588	138,669	49,822	19,646,093	\$2.97
2009-10	77,373	35,533	104	18	166	421	609	75	4	186	0	648	635	272	1,741	13,604,824	3,741,319	1,236,856	475,587	226,062	66,425	19,332,753	\$3.16
2010-11	79,845	37,288	128	26	146	438	606	75	4	184	0	659	635	272	1,750	13,448,493	3,788,924	1,414,697	551,880	238,401	54,887	19,551,242	\$3.29
2011-12	79,179	38,107	115	28	154	454	611	79	6	181	0	671	640	266	1,758	13,464,520	3,904,048	1,499,256	558,897	214,853	14,616	19,710,190	\$3.50

*** Due to the transition from the old funding method to the new funding method, transportation funding was frozen at the same level as the previous year, resulting in the same cost per mile being reported.