



Wyoming Department of Education

Dr. Jim McBride, Superintendent of Public Instruction

Hathaway Building, 2nd Floor, 2300 Capitol Avenue

Cheyenne, WY 82002-0050

Phone 307-777-7673 Fax 307-777-6234 Website www.k12.wy.us

Hathaway Scholarship Statistics 2009/10

State Level Reports

-

Comparing the First Four Cohorts

Report Date: 11/17/2010

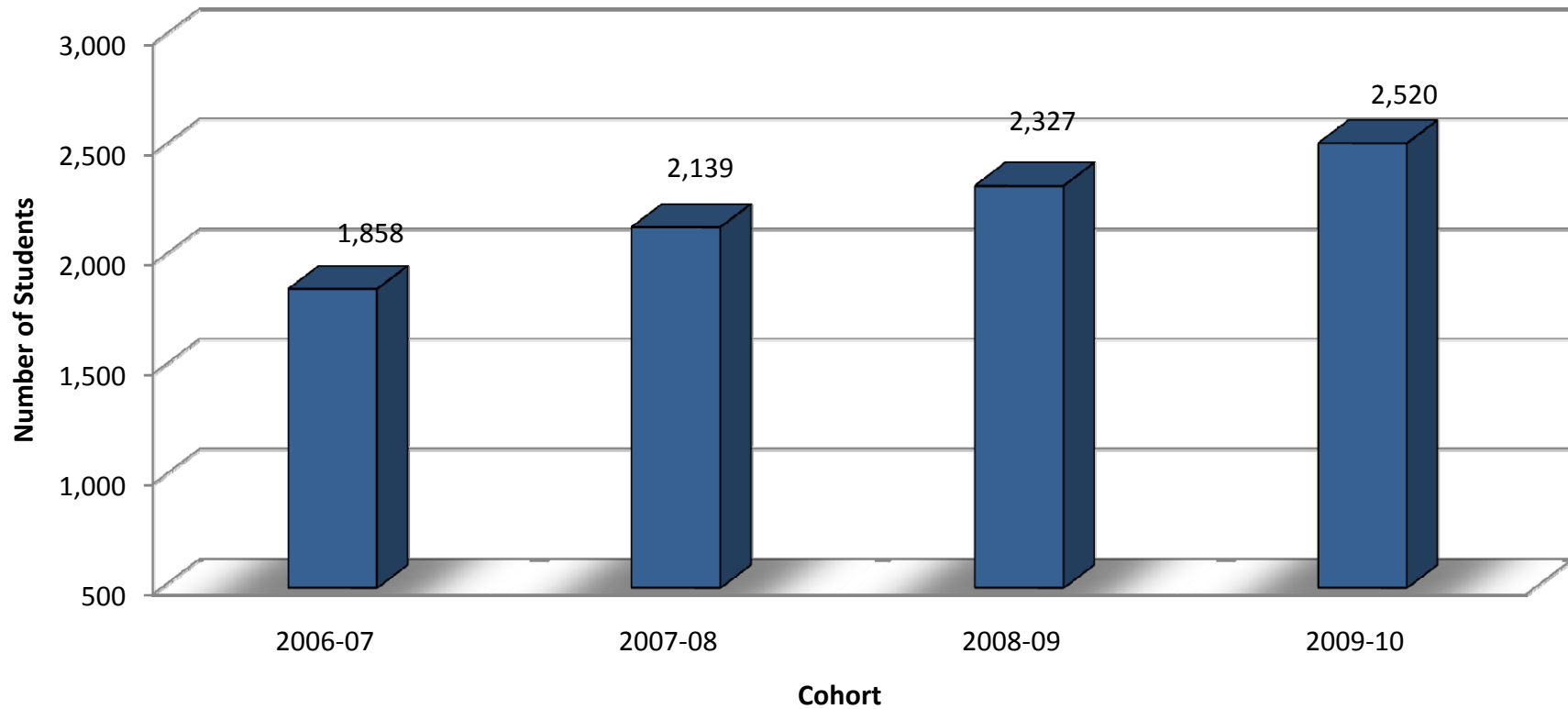


Since Inception of the Hathaway Scholarship Program

Initial Number of Students Accepting Hathaway

by Cohort

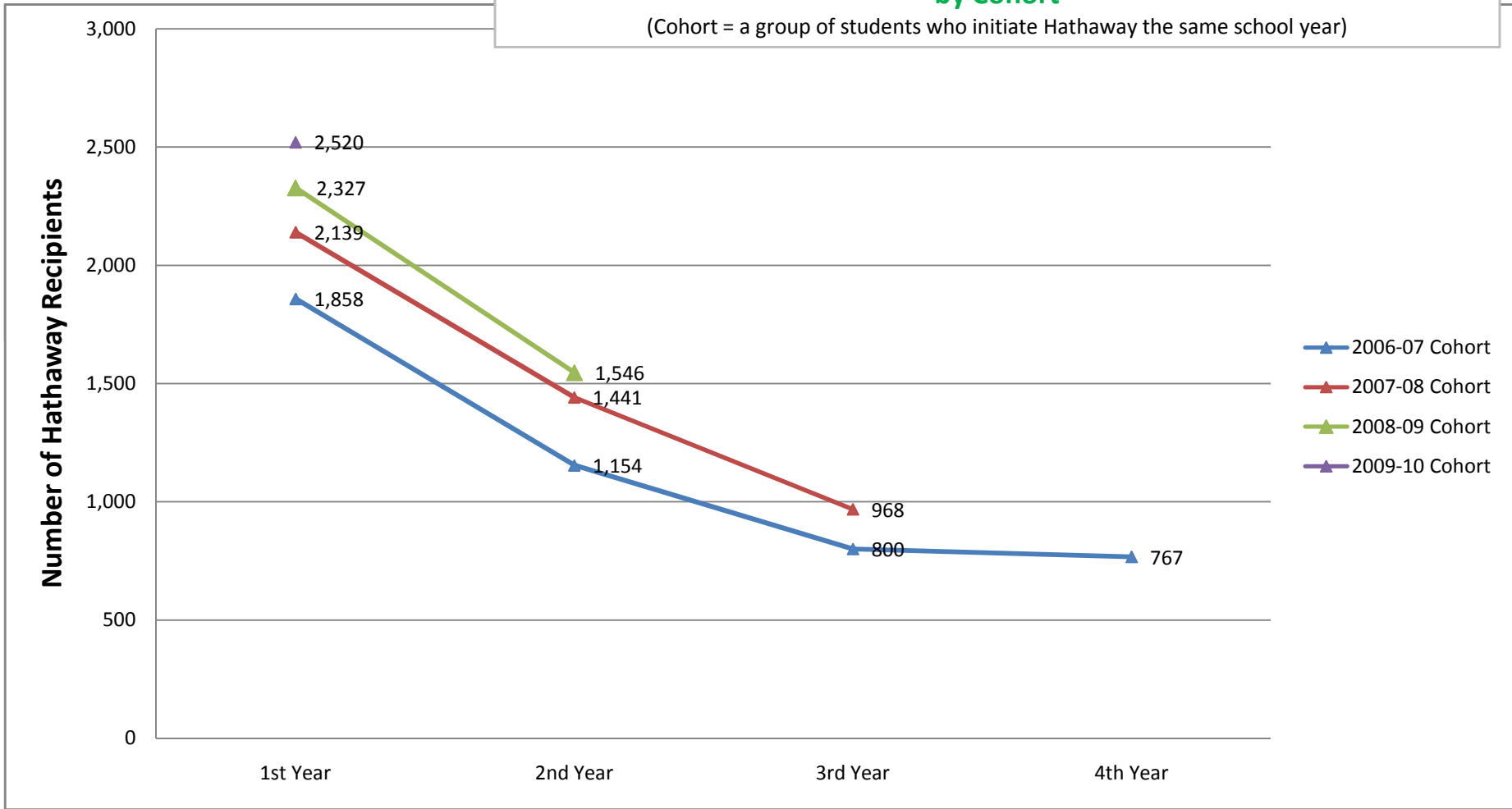
(Cohort = a group of students who initiate Hathaway the same school year)



These student counts represent the number of students who initiated their Hathaway scholarship during each of the past four school years. These groups of students became the Hathaway Cohort for the school year they entered the program. The cohorts are tracked separately for reporting purposes.



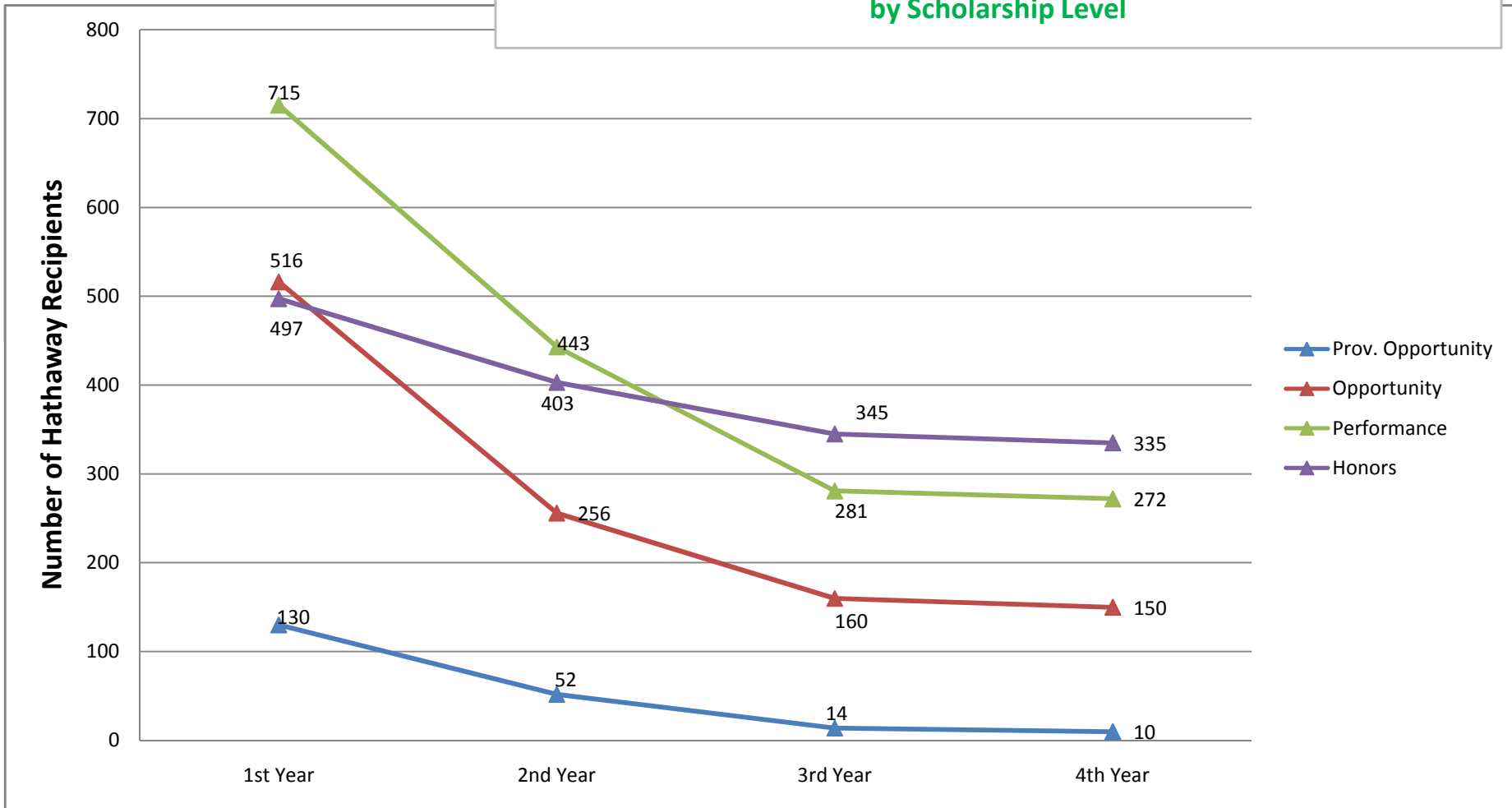
Since Inception of the Hathaway Scholarship Program
 -
Progression of Students Receiving Hathaway Each Year
 -
by Cohort
 (Cohort = a group of students who initiate Hathaway the same school year)



The number of scholarship recipients within each cohort decline over time as students obtain their goal (certificate or degree), lose eligibility, reach the maximum allowable hours of funding, or leave the program for other reasons. The figures above represent the number of students who receive the scholarship for at least one of the semesters within a school year.



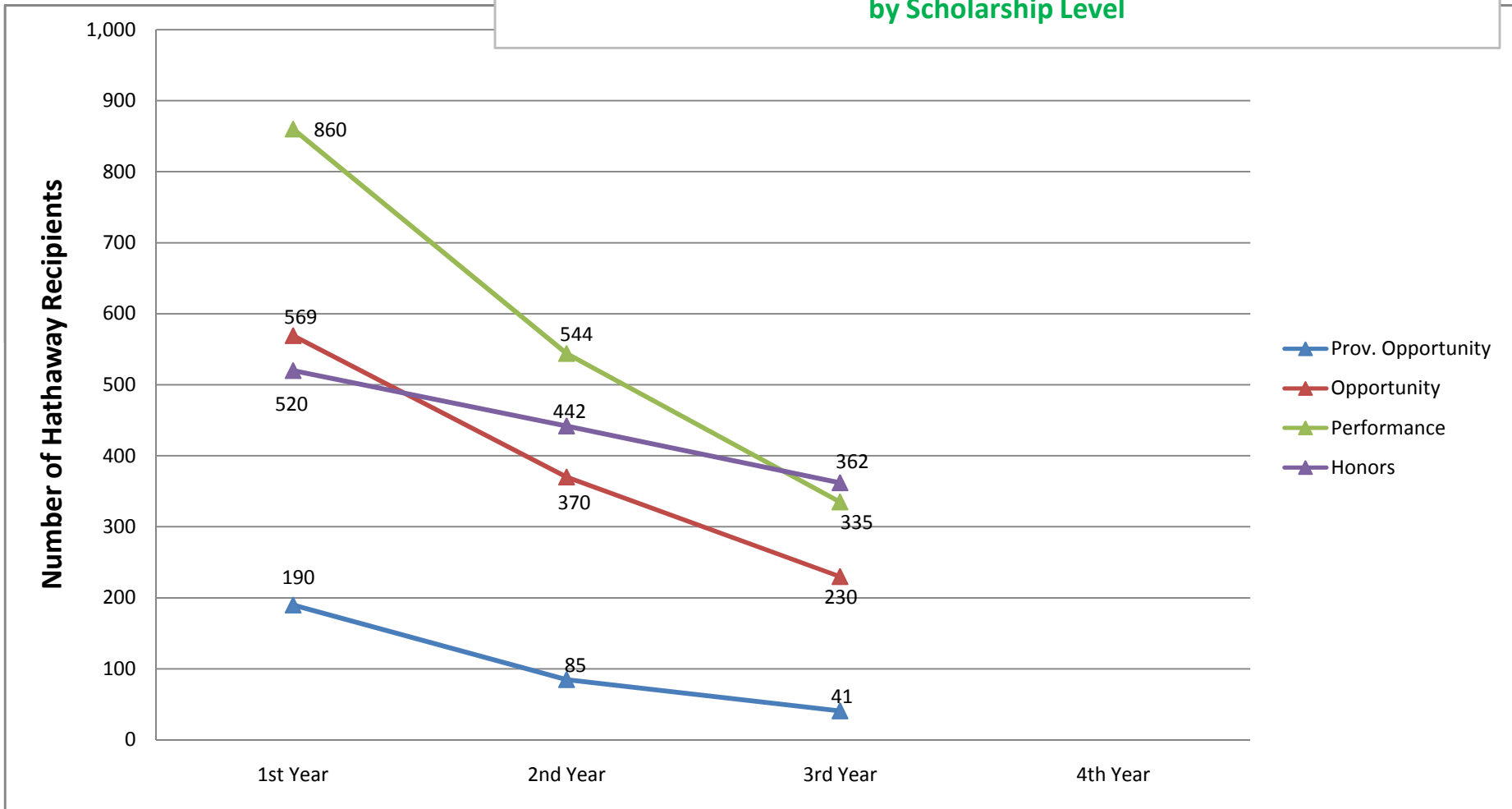
Since Inception of the Hathaway Scholarship Program
 -
 Progression of the **2006-07** Cohort Receiving Hathaway Each Year
 -
 by Scholarship Level



The number of scholarship recipients within each cohort decline over time as students obtain their goal (certificate or degree), lose eligibility, reach the maximum allowable hours of funding, or leave the program for other reasons. The figures above represent the number of students who receive the scholarship for at least one of the semesters within a school year.



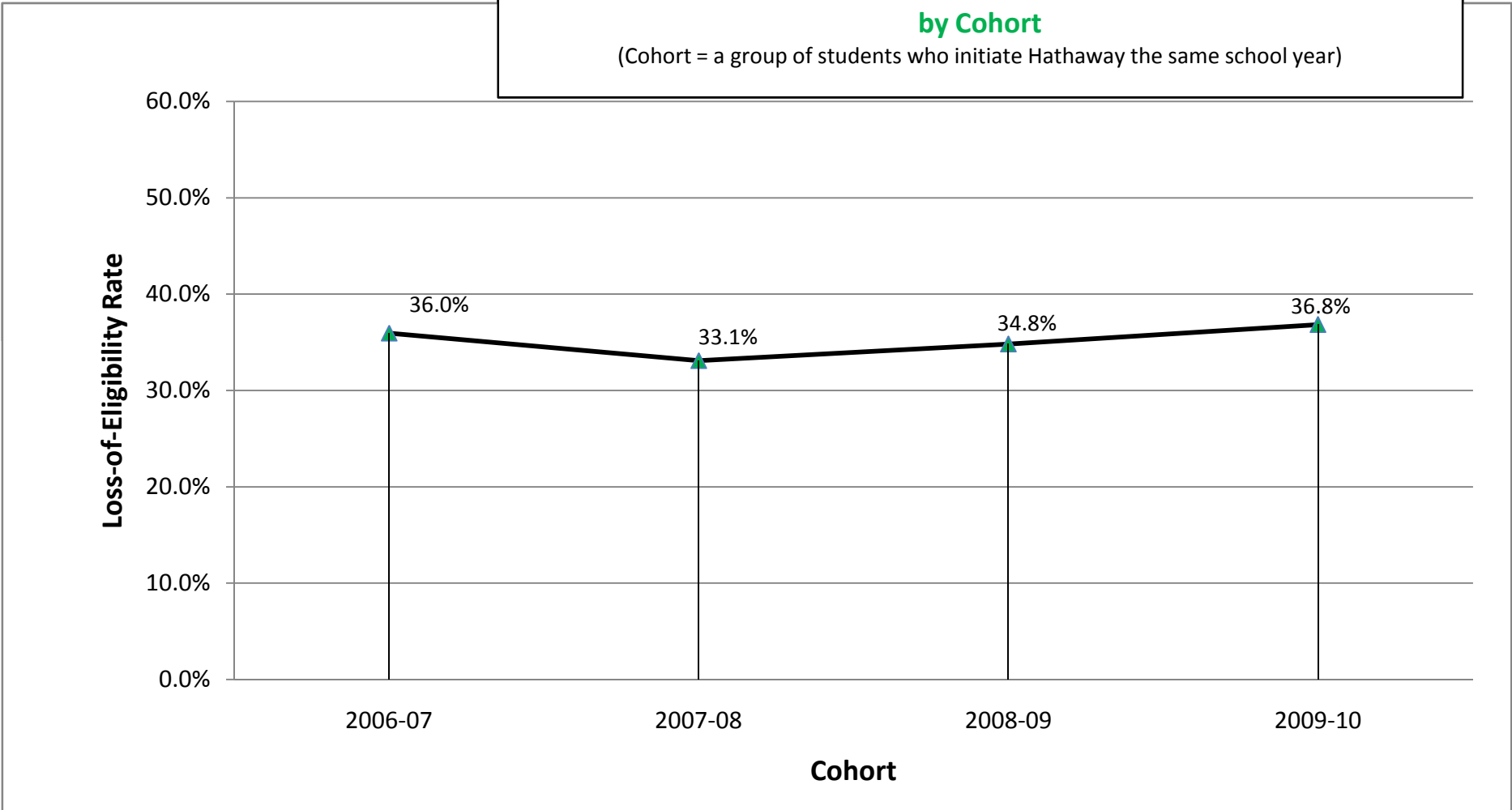
Since Inception of the Hathaway Scholarship Program
 -
 Progression of the **2007-08** Cohort Receiving Hathaway Each Year
 -
 by Scholarship Level



The number of scholarship recipients within each cohort decline over time as students obtain their goal (certificate or degree), lose eligibility, reach the maximum allowable hours of funding, or leave the program for other reasons. The figures above represent the number of students who receive the scholarship for at least one of the semesters within a school year.



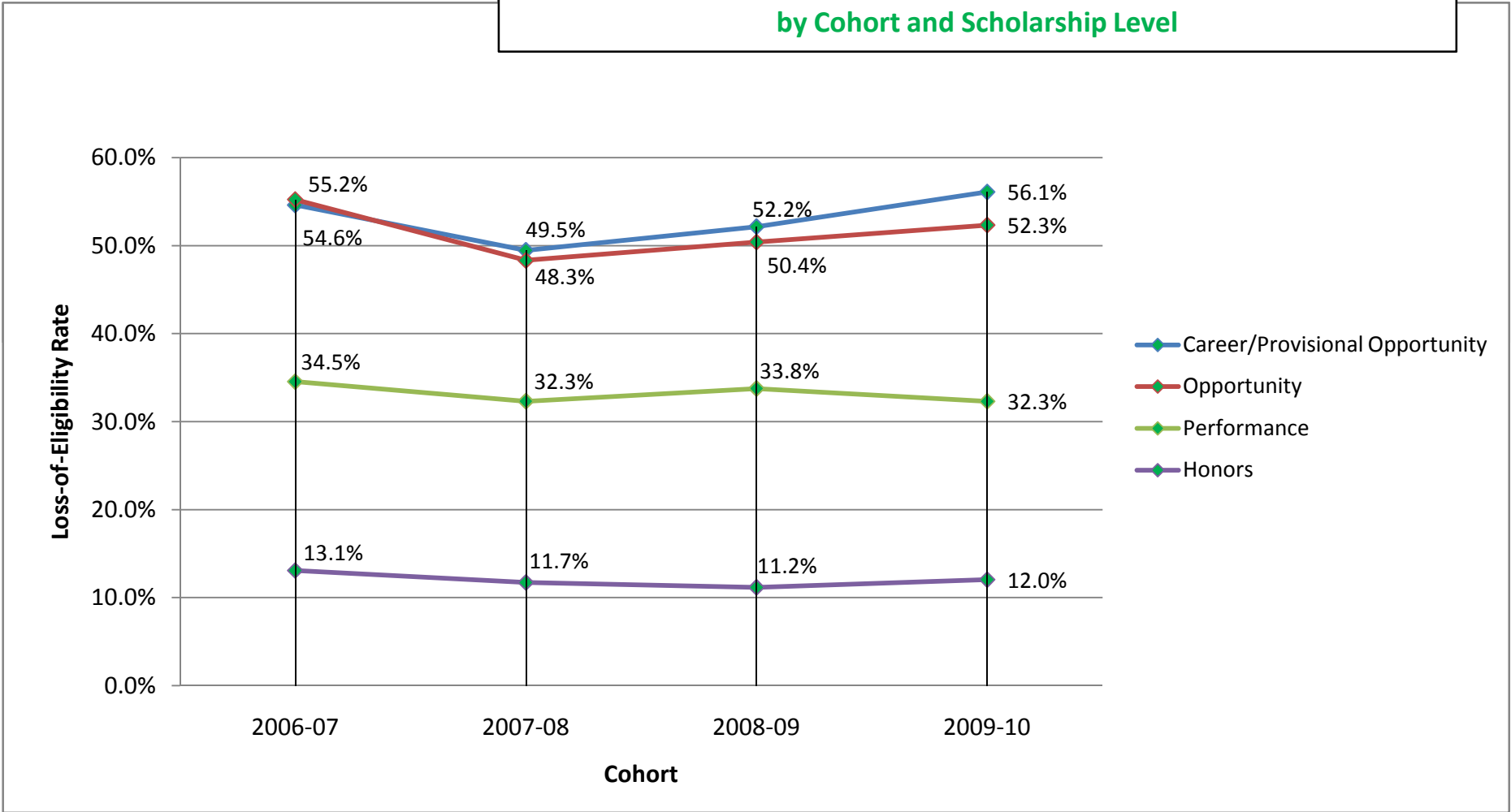
Since Inception of the Hathaway Scholarship Program
-
Percent of Students Losing Eligibility After Their First Year
-
by Cohort
(Cohort = a group of students who initiate Hathaway the same school year)



Loss of eligibility is always at its highest after a cohort's freshman year and is a good comparison measure. These rates are also computed for the sophomore, junior and senior years, but the calculations take other factors into account, such as students regaining eligibility, reaching the maximum allowable credit hours, or achieving a goal (certificate/degree) prior to "spending" all allotted hours.



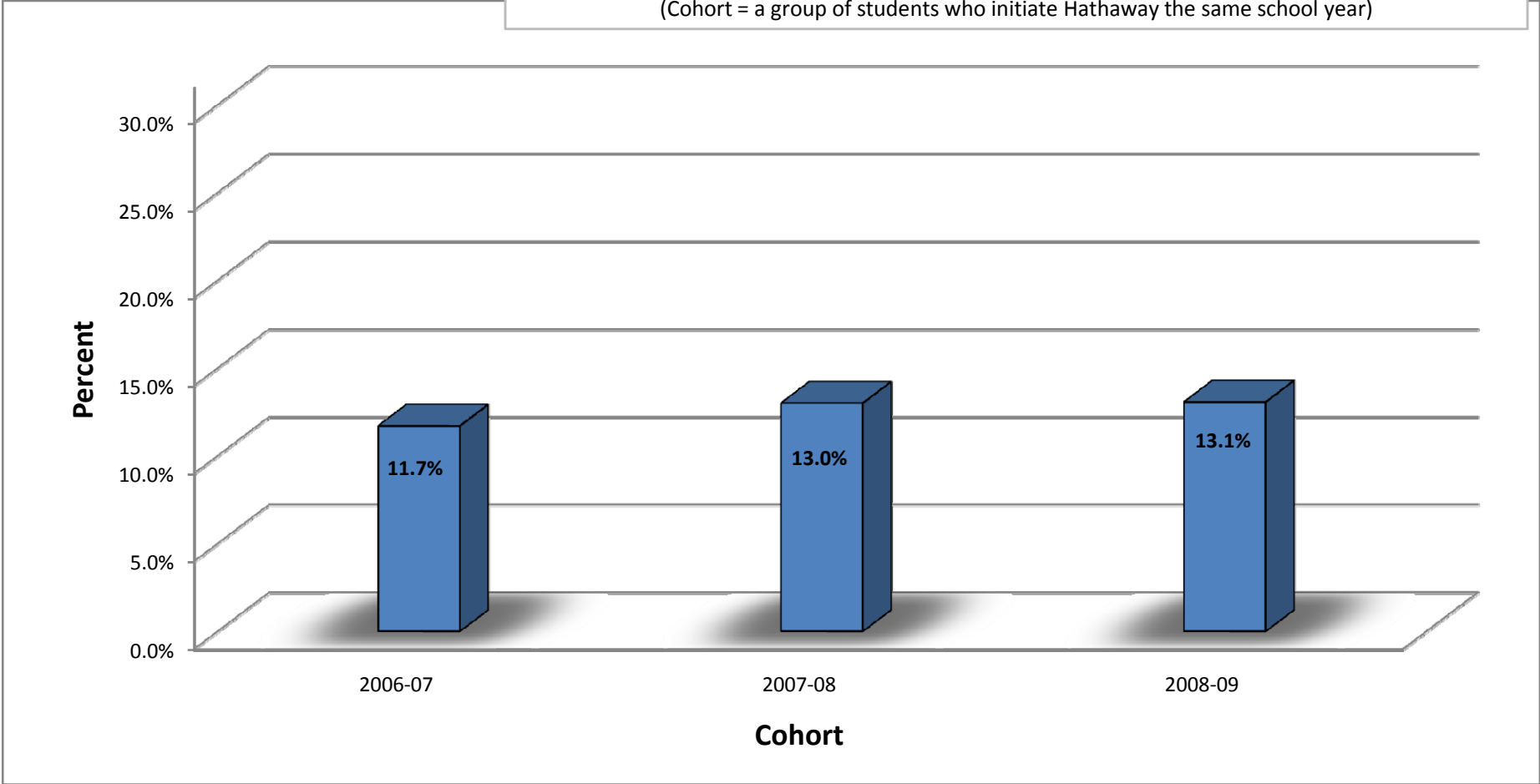
Since Inception of the Hathaway Scholarship Program
 -
Percent of Students Losing Eligibility After Their First Year
 -
by Cohort and Scholarship Level



Loss of eligibility is always at its highest after a cohort's freshman year and is a good comparison measure. These rates are also computed for the sophomore, junior and senior years, but the calculations take other factors into account, such as students regaining eligibility, reaching the maximum allowable credit hours, or achieving a goal (certificate/degree) prior to "spending" all allotted hours.

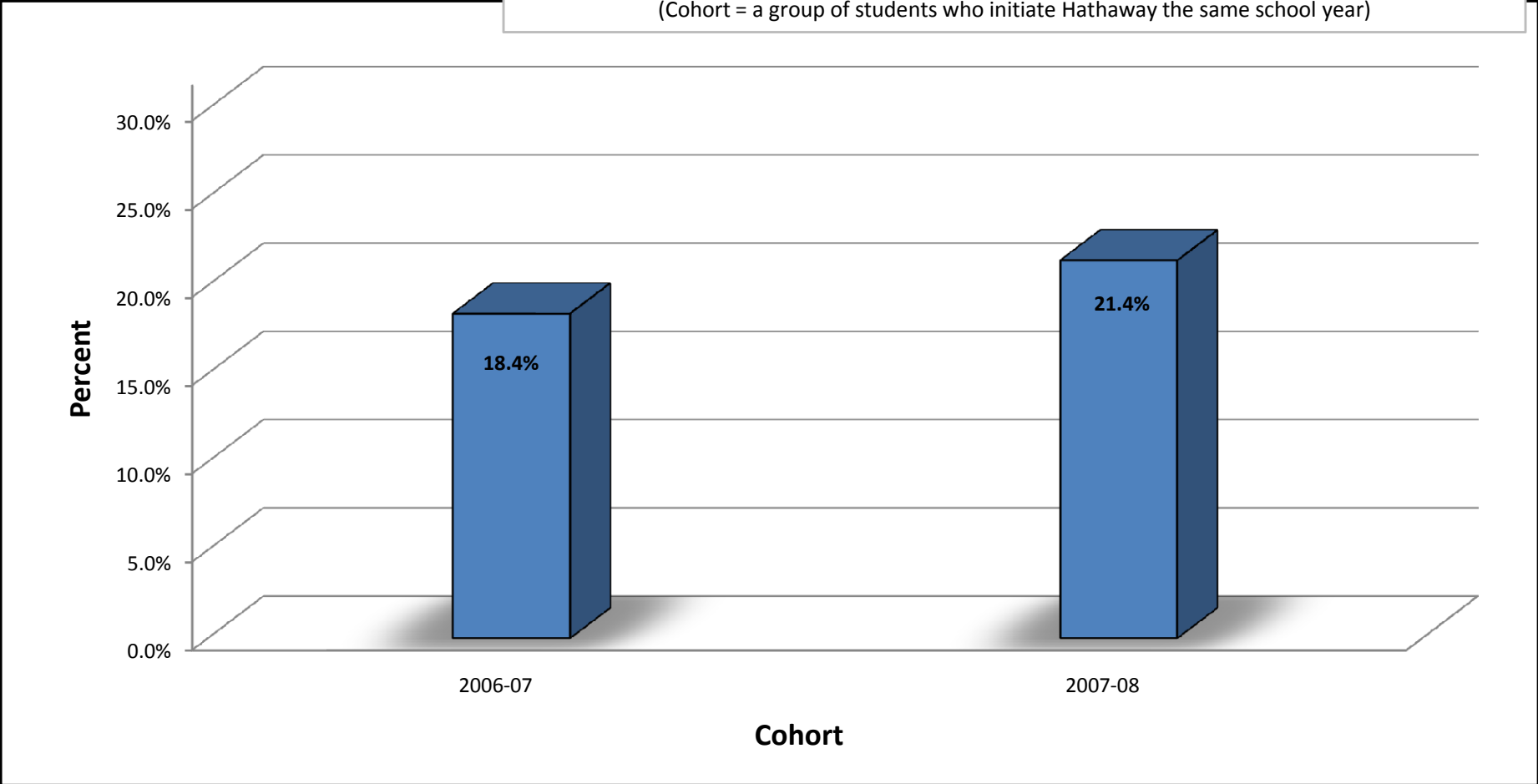


Since Inception of the Hathaway Scholarship Program
-
Percent of Hathaway Students Receiving a Certificate or Degree within
2 Years of Initiating the Scholarship
-
by Cohort
(Cohort = a group of students who initiate Hathaway the same school year)





Since Inception of the Hathaway Scholarship Program
-
Percent of Hathaway Students Receiving a Certificate or Degree within
3 Years of Initiating the Scholarship
-
by Cohort
(Cohort = a group of students who initiate Hathaway the same school year)





Since Inception of the Hathaway Scholarship Program
-
Percent of Hathaway Students Receiving a Certificate or Degree within
4 Years of Initiating the Scholarship

